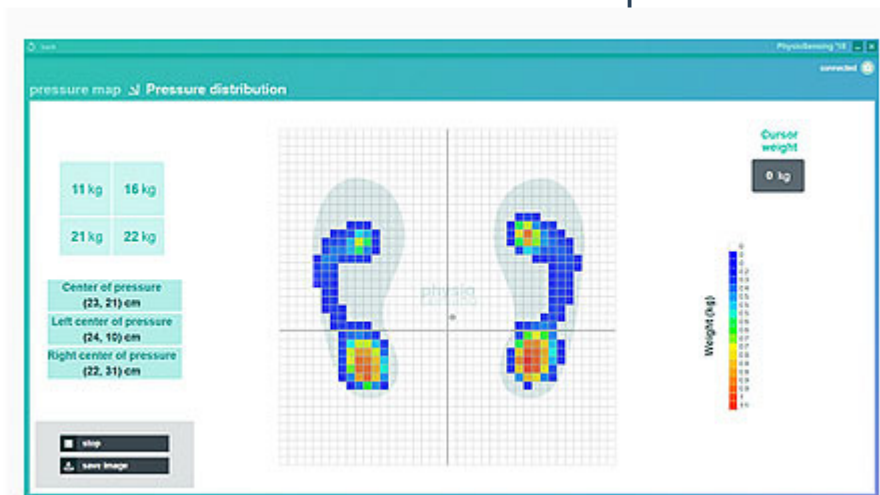


# Feet Pressure Map



Use the plantar pressure map to obtain the pressure points of the foot. Beyond the pressure, the load distribution in the sagittal and anteroposterior planes as well as the coordinates of the pressure center can be acquired. The areas with peaks of pressure are represented by the red color and the ones with less pressure in dark blue. It is also possible to click in a square of the map to obtain the weight (in kg) that is being made in that square.

Outputs: Feet pressure map image; CoP coordinates, Load distribution